



Installation & Commissioning Guide

VR CNC Milling 6

F1 ROUTER, COMPACT 1000/PRO, ROUTER 2600/PRO,
ROUTER 6600/PRO, MICROMILL PRO, VMC1300/PRO



Installation & Commissioning Guide

VR CNC Milling 6

F1 ROUTER, COMPACT 1000/PRO, ROUTER 2600/PRO,
ROUTER 6600/PRO, MICROMILL PRO, VMC1300/PRO

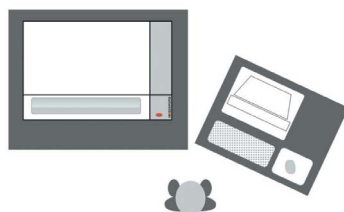
1. UNPACK AND CHECK EQUIPMENT

Before setting up your Denford machine, please check your separate order documentation, making sure that all items have been delivered. Any missing or damaged items should be reported to Denford Customer Services as soon as possible.

2. POSITION MACHINE WITH COMPUTER

Ensure that any inlet / exhaust vents are not covered or blocked.

Plan view showing ideal machine layout and operating positions



Machine Operator

3. CONNECT USB AND POWER CABLES



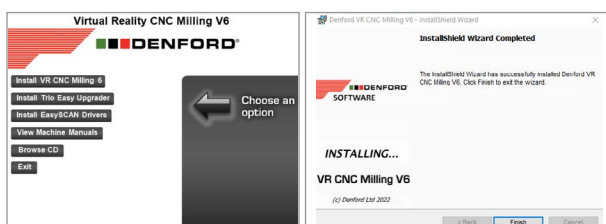
Connect the computer to the machine using the Ethernet cable into the RJ45 port.

The connection to the computer can be via Ethernet or you can use the Ethernet to USB connector:

Turn Power Button on.

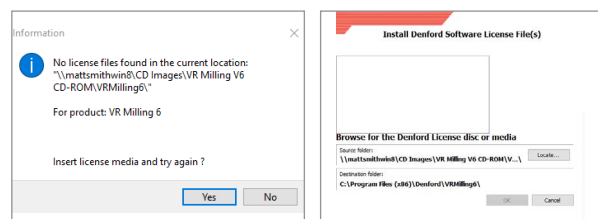
4. INSTALL VR CNC MILLING

Insert the VR CNC Milling CD into the computer. Click on "Install VR CNC Milling 6" and follow "InstallShield Wizard" instructions.



4. INSTALL VR CNC MILLING (cont.)

The license application will run after the installation. The software will check for the **seckey.tff** license file. If it is not found in the current location click **Yes** to browse another location (it is normally supplied on a separate CD).

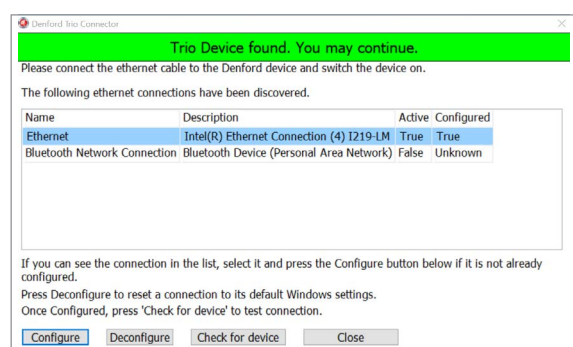


Once you have located the license file, check that the destination directory is correct and click **Install**. You may cancel license installation at any point, as the software will prompt for a license every time it is run.

N.B. Now is a good time to print or copy the machine manual (PDF) from the VR CNC Milling CD and to make a backup of the Licence Code.

5. CONFIGURE MACHINE CONNECTION

Select the connection you require from the list and Press **Configure**.



If you can't see the device, please make sure that the Ethernet cable is connected and that the machine has power to it, then click 'check for device'.

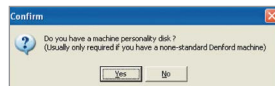
6. RUNNING THE VR MILLING SOFTWARE

The software will be located inside the Denford Applications folder, created on your desktop.

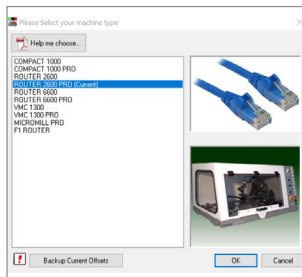


Double-click on the **VR CNC Milling 6** icon to run the software

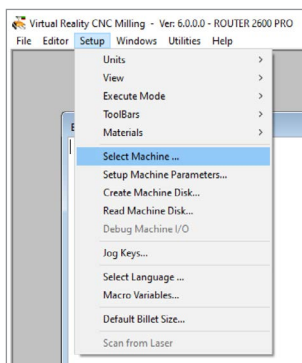
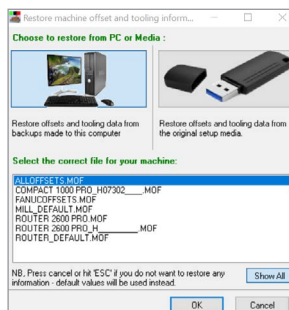
Occasionally, non-standard Denford machines will come with a personality disk. Click **Yes** if your machine was supplied with one, otherwise click **No**.



Now select the machine you have purchased. It is important to choose the correct machine and whether it is a PRO version or not. If you are not sure, refer to the **Serial Plate** on the side of the machine.



You may now restore any previous tool or offset data. If it is a first time install, then simply choose **ALLOFFSETS.MOF** and click **OK**.



N.B. You can change the selected machine type at any time from the menu: **Setup > Select Machine...**

Need more help?

Get help, advice and share designs online:
denforddata.com/bb

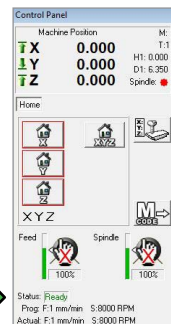
7. TEST MACHINE COMMUNICATION

To test the connection to the machine, press the **Connect to Real Machine** button in the VR Milling software window:



If the connection is OK, then the machine control panel will appear as shown. Check that the status indicator reads **Ready**.

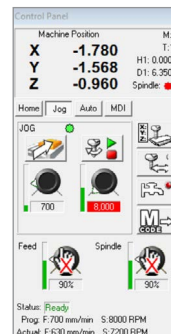
The red border around each axis home button indicates that the axis must be homed before proceeding.



Press **HOME XYZ** button and the machine will move to its home position.



Press **JOG** button. This will allow you to move the axes around using the **ARROW Keys** and **Page UP/DOWN**.

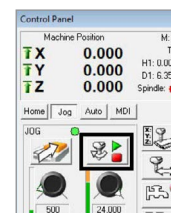


WARNING
When pressing **PAGE DOWN** this will move the head of the machine towards the bed, so please be careful how far you move the axis.

Before moving the axes of the machine, slow the speed of the axis movement by rotating the feed rate override button anticlockwise.



To check the machine spindle rotates, please press **spindle start stop** button.



On-Line Technical Forum

TECHNICAL SUPPORT AVAILABLE 24 HOURS A DAY, 7 DAYS A WEEK

Denford's Technical Forum is a free of charge on-line technical support service that is available to Denford customers 24 hours a day, 7 days a week.

"The technical forum has provided a wealth of information and support for our 20-year-old Denford CNC machine, in fact just as good as the support we receive for our brand new CNC Router!"



Denford's On-Line Technical Forum is a free of charge service that can be accessed 24 hours a day, 7 days a week.

The On-Line Technical Forum is available to Denford customers, old and new, and it couldn't be easier to use. Just visit <http://www.denfordata.com/bb/> and register on line.....it's that simple.

Denford's On-Line Technical Forum opens up the traditional communication channels that can restrict customer and technical support, due to availability of staff, teaching commitments or different time zones.

A multitude of topics relating to Denford machines and software (both new and old) are covered within the forum, which is simple to search, and easy to use.

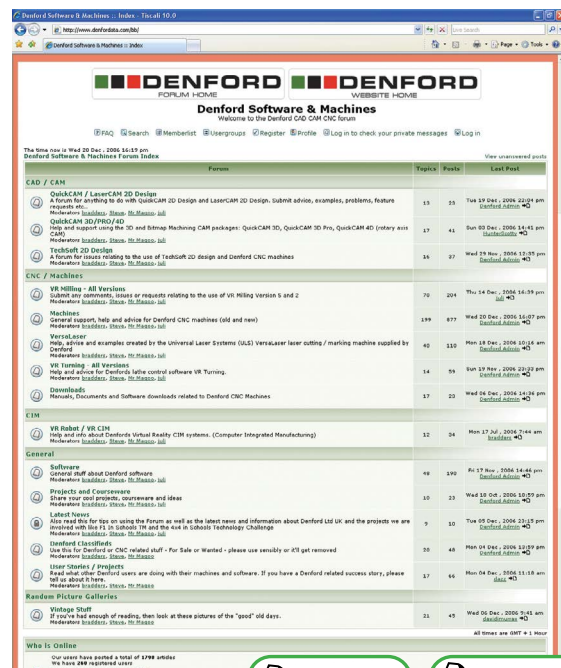
Denford's Technical Team and Denford customers from around the world regularly log on to the forum to offer support and advice and, most importantly, post a solution for all to see.

As well as offering comprehensive technical support, Denford's On-Line Technical Forum enables customers to share ideas and projects with other users. Media such as teaching material, project work, PDF's, images, drawings and text documents are easily attached to messages for all users to view and comment on.

You can also read the latest Denford news before anyone else, and keep track of machine and software upgrades, some of which can be downloaded direct from the Technical Forum web site.

The On-Line Technical Forum has proved to be hugely popular with customers. One recent user posted a note to inform us that the Technical Forum has "provided a wealth of information and support for our 20-year-old Denford CNC machine, in fact just as good as the support we receive for our brand new CNC Router!"

Of course the traditional methods of phone and email are still available, but try out this new service by simply logging on to www.denfordata.com/bb/ and register.



ISO9001 Compliant